

## **TNT DOOR & DRAWER, INC. COMPANY HISTORY**

---

Thank you for your interest in TNT Door & Drawer, Inc. We are committed to providing a quality product that compliments your cabinetry in a lead time that compliments your calendar. With over 15 years of experience in custom cabinetry and components, we are dedicated to helping you grow your business.

We are experts in crafting a wide variety of door styles, in almost any wood species, in virtually any size, and we even do custom door design orders as well. The doors in this catalog represent our standard door styles.

It has been our goal at TNT from the start, to provide a customer service level of excellence. As many may already know, Darrell Tweedell, owner, grew up in the cabinet industry along side his father at their custom cabinet company. At a very young age, Darrell learned skills along with understanding about the business. This combination of 25 years in the industry, excellent teaching, and ongoing customer satisfaction has enabled TNT Door & Drawer to be a strong competitor in the industry.

With our outstanding reputation and history, you can rest easy knowing TNT will stand by your side to help you reach your company goals.

All of us at TNT look forward to providing you with that level of service that we all look for when ordering products. It is with that level of service that we hope to maintain a long lasting relationship with all our customers.

Thank you from all of us at TNT.



**TNT DOOR & DRAWER, INC.**  
**ONE YEAR LIMITED WARRANTY**

---

TNT Door & Drawer, Inc. warrants that each cabinet door will be free from warpage, swelling or twisting for a period of one year from the date of delivery, when given reasonable treatment.

Defective doors will either be repaired or replaced, F.O.B. Covington, Georgia, and TNT Door & Drawer, Inc. reserves the right, in its sole discretion, to either repair or replace any defective door as defined under this limited warranty. Liability under this warranty is limited to the net invoice of each door as established by TNT Door & Drawer, Inc.'s own manufacturing costs.

It is expressly agreed that this limited warranty shall be in lieu of all warranties of fitness and in lieu of any warranty of merchantability.

Purchaser acknowledges that he/she has not relied on TNT Door & Drawer's skill or judgment to select or furnish cabinet doors for any particular purpose and this sale is made without any warranty by seller that the doors supplied are suitable for any particular purpose there are no warranties, either expressed or implied, which extend beyond the description on the face of this limited warranty.

**REASONABLE TREATMENT REQUIRES DOORS AND DRAWER FRONTS TO:**

- Be stored in areas not subject to abnormal heat, cold, dryness, humidity, or direct sunlight.
- Not be stored in freshly plastered buildings or damp and humid open areas.
- Not be subject to impairment of structural strength when fitting or applying hardware.
- Be finished on front, back, top, bottom, and sides with an equal amount of finish, within 5 days of completion, to prevent unequal absorption or release of moisture.
- Doors and drawer fronts are not recommended in any area which temperatures will exceed 120 degrees Fahrenheit. It is recommended to use a filler between all heat sources and the cabinet.
- Any door claimed to be defective must be returned to TNT Door & Drawer, Inc. for inspection.

**SPECIFIC LIMITATIONS**

TNT Door & Drawer's one year limited warranty does not extend to the following situations:

- Warpage or twisting of three-sixteenth  $\frac{3}{16}$  of an inch or less shall be considered as acceptable and not a defect under the terms of this limited warranty.
- Any door having a width of 24 inches or height of 60 inches or more is expressly excluded from this limited warranty. Any Drawer front having a length of 33 inches or height of 10 inches or more is expressly excluded from this limited warranty.
- This limited warranty expressly excludes reimbursement to the purchaser for repair or replacement of defective doors by any agents or workmen of other cabinet door companies hired by the purchaser, other than TNT Door & Drawer, Inc. without the prior written consent of TNT Door & Drawer, Inc.
- Final finished width and height of all doors and drawer fronts may vary +/-  $\frac{1}{16}$ ".

**SALES POLICY**

All doors and drawer fronts are custom manufactured from raw materials to customer size and specification; therefore all sales are final.

### ORDERING INFORMATION

All orders can be phoned in or faxed. Please be advised that phoned in orders will be called back to the customer for accuracy. Size errors on phoned in orders will be at the customers expense once the order is called back. Faxed orders will be entered and a fax acknowledgement will be sent back to the customer for approval. Once approved by the customer, size errors will be at the customers expense.

All changes made after the order goes into production will be at the customer's expense.

Orders are processed as they are received. All orders received after 2 PM may be processed the following business day.

### SHIPPING INFORMATION

All orders are scheduled for delivery as completed. Delivered orders with a subtotal under \$300.00 will be charged a \$10.00 delivery fee. No delivery fee will be charged for orders over the \$300 minimum. There may be an additional delivery charge if unable to accept delivery as scheduled. Orders that must ship by freight will be charged according to the carrier. Freight charges will vary due to weight and distance.

### PAYMENT METHODS

It is the policy of TNT Door & Drawer to require full or partial payments for orders placed with our company as all orders are custom built. All customers are considered C.O.D. unless prior arrangements have been made with the credit department. Orders can be paid with cash, check, Master Card, Visa, or Money Order.

\* Retail accounts require 100% payment up front.

\*\*Wholesale accounts require a 50% deposit on initial order.



# COPE & STICK DOORS



1515DF RP \*



SLAB \*



1515DF RW B FP \*



Door Profile: 1515 RP  
Panel: TP-1  
Inside Profile: TCS-1  
Outside Profile: T-2



Door Profile: 1515 FP  
Panel: TP-11  
Inside Profile: TCS-1  
Outside Profile: T-15



Door Profile: 1515 RW B FP  
Panel: TP-14  
Inside Profile: TCS-1  
Outside Profile: T-1



S1515DF RW FP \*



SD1515DF FP \*



1515DF FP \*



Door Profile: S1515 RW FP  
Panel: TP-13  
Inside Profile: TCS-2  
Outside Profile: T-5



Door Profile: SD1515 FP  
Panel: TP-11  
Inside Profile: TCS-2  
Outside Profile: T-5



Door Profile: 1515 FP  
Panel: TP-11  
Inside Profile: TCS-6  
Outside Profile: T-5

\* Profiles match door below



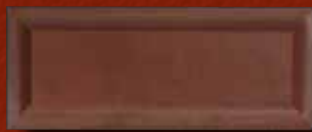
# COPE & STICK DOORS



SLAB (PC-TP-2)



Door Profile: 2015 RP  
Panel: TP-2  
Inside Profile: TCS-1  
Outside Profile: T-4  
Arch Height: 1 5/8"



SLAB (PC-TP-1)



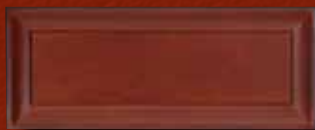
Door Profile: 2020 RP  
Panel: TP-1  
Inside Profile: TCS-1  
Outside Profile: T-1  
Arch Height: 1 5/8"



SLAB \*



Door Profile: 2515 RP  
Panel: TP-3  
Inside Profile: TCS-1  
Outside Profile: T-8  
Arch Height: 1"



SLAB (PC-TP-2)



Door Profile: 2525 RP  
Panel: TP-2  
Inside Profile: TCS-1  
Outside Profile: T-2  
Arch Height: 1"



SLAB \*



Door Profile: 3015 RP  
Panel: TP-1  
Inside Profile: TCS-1  
Outside Profile: T-8  
Arch Height: 1"



1515DF RP \*



Door Profile: 3030 RP  
Panel: TP-1  
Inside Profile: TCS-1  
Outside Profile: T-9  
Arch Height: 1"

\* Profiles match door below



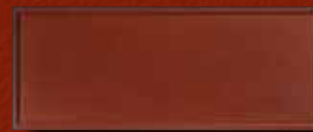
# COPE & STICK DOORS



SLAB \*



1515DF RP \*



SLAB \*



Door Profile: 3515 RP  
Panel: TP-1  
Inside Profile: TCS-1  
Outside Profile: T-1  
Arch Height: 1 5/8"



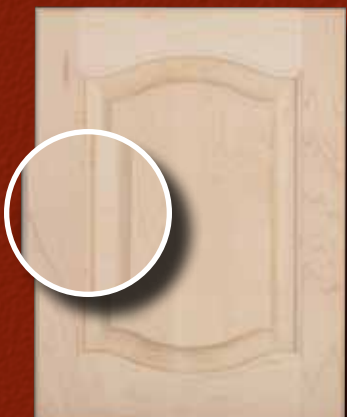
Door Profile: 3535 RP  
Panel: TP-1  
Inside Profile: TCS-1  
Outside Profile: T-1  
Arch Height: 1 5/8"



Door Profile: 4015 RP  
Panel: TP-1  
Inside Profile: TCS-1  
Outside Profile: T-9  
Arch Height: 1"



1515DF RP



Door Profile: 4040 RP  
Panel: TP-1  
Inside Profile: TCS-1  
Outside Profile: T-2  
Arch Height: 1"

\* Profiles match door below



# ADVANTAGE SERIES COPE & STICK DOORS



Manchester RP Front



Manhattan FP Front



Slab



Door Profile: Manchester RP  
Panel: TP-1  
Inside Profile: Manchester  
Outside Profile: T-6



Door Profile: Manhattan FP  
Panel: TP-11  
Inside Profile: Manhattan  
Outside Profile: T-5



Door Profile: Manchester FP  
Panel: TP-11  
Inside Profile: Manchester  
Outside Profile: T-6

Door Style	Rail Width	Inside Rail Profile	Panel Profile	Outside Edge Profile	Raised Panel Minimum	Flat Panel Minimum
Manchester FP	2"	Manchester	TP-11	T-5 or T-6	NA	7"x10"
Manchester B FP	2"	Manchester	TP-12	T-5 or T-6	NA	7"x10"
Manchester RP	2"	Manchester	TP-1	T-5 or T-6	7"x10"	NA
Manhattan FP	2"	Manhattan	TP-11	T-5 or T-6	NA	7"x10"
Manhattan B FP	2"	Manhattan	TP-12	T-5 or T-6	NA	7"x10"
Manhattan RP	2"	Manhattan	TP-1	T-5 or T-6	7"x10"	NA

# TNT Door & Drawer Cope & Stick Specifications

	Door Style	Rail Width	Arch Height TOP/BOTTOM	Raised Panel Minimum	Flat Panel Minimum	Inside Profile	Panel	Edge Width	Mullion
	SLAB	NA	NA	NA	NA	NA	Minimum 6"x3 1/2"	All T Profiles	NA
	1515	2 1/2"	NA	8"x10"	8"x10"	All TCS Styles	All TP profiles except TP-9, minimum 9"x11"	All T Profiles	NA
	1515DF	2 1/2"	NA	12"x6"	12"x5 1/2"	All TCS Styles	All TP profiles except TP-9, minimum 13"x7"	All T Profiles	NA
	D1515	2 1/2"	NA	14"x10"	13"x10"	TCS Styles 1,3,4,5,6,7	All TP profiles except TP-9 Min 15"x11"	All T Profiles	3"
	D1515DF	2 1/2"	NA	14"x6"	13"x5 1/2"	TCS Styles 1,3,4,5,6,7	All TP profiles except TP-9: minimum 15"x7"	All T Profiles	3"
	S1515	2 1/2"	NA	8"x10"	8"x10"	TCS-2	All TP profiles except TP-9 Min 9"x11"	All T Profiles	NA
	S1515DF	2 1/2"	NA	12"x6"	12"x5 1/2"	TCS-2	All TP profiles except TP-9 Min 13"x7"	All T Profiles	NA
	SD1515	2 1/2"	NA	14"x10"	13"x10"	TCS-2	All TP profiles except TP-9 Min 15"x11"	All T Profiles	2 1/2"
	SD1515DF	2 1/2"	NA	14"x6"	13"x5 1/2"	TCS-2	All TP profiles except TP-9 Min 15"x7"	All T Profiles	2 1/2"
	2015	2 1/2"	1 5/8" / NA	10"x12"	10"x12"	All TCS Styles	All TP profiles except TP-9 Min 11"x13"	All T Profiles	NA
	2020	2 1/2"	1 5/8" / 1 5/8"	10"x14"	10"x14"	All TCS Styles	All TP profiles except TP-9 Min 11"x15"	All T Profiles	NA
	2515	2 1/2"	1" / NA	8"x10"	8"x10"	All TCS Styles	All TP profiles except TP-9 Min 9"x11"	All T Profiles	NA
	2525	2 1/2"	1" / 1"	8"x12"	8"x12"	All TCS Styles	All TP profiles except TP-9 Min 9"x13"	All T Profiles	NA
	3015	2 1/2"	1" / NA	10"x12"	10"x12"	All TCS Styles	All TP profiles except TP-9 Min 11"x13"	All T Profiles	NA
	3030	2 1/2"	1" / 1"	10"x14"	10"x14"	All TCS Styles	All TP profiles except TP-9 Min 11"x15"	All T Profiles	NA
	3515	2 1/2"	1 5/8" / NA	10"x12"	10"x12"	All TCS Styles	All TP profiles except TP-9 Min 11"x13"	All T Profiles	NA
	3535	2 1/2"	1 5/8" / 1 5/8"	10"x14"	10"x14"	All TCS Styles	All TP profiles except TP-9 Min 11"x15"	All T Profiles	NA
	4015	2 1/2"	1" / NA	10"x12"	10"x12"	All TCS Styles	All TP profiles except TP-9 Min 11"x13"	All T Profiles	NA
	4040	2 1/2"	1" / 1"	10"x14"	10"x14"	All TCS Styles	All TP profiles except TP-9 Min 11"x15"	All T Profiles	NA

**Notes:**

All drawer fronts under 8" in height will have 1 3/8" top and bottom rails.

All doors over 50" will be split equally unless otherwise specified.



# STICK PROFILES



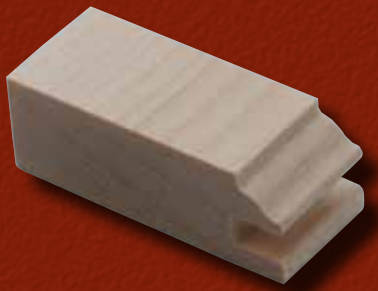
TCS-1



TCS-2



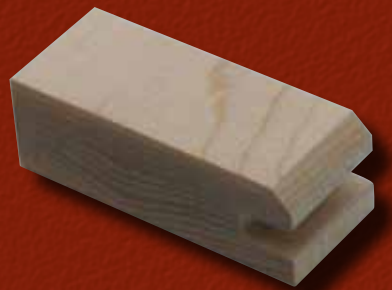
TCS-3



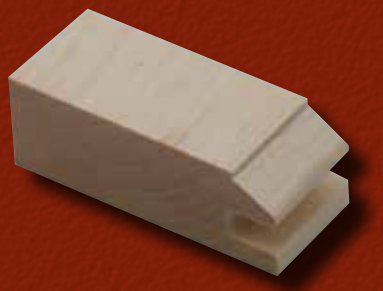
TCS-4



TCS-5



TCS-6



TCS-7



# TNT Door & Drawer Stick Profile Specifications

	Stick Profile	Standard Width	Tenon Length	Mullion Width	Finished Thickness	Notes
	TCS-1	2 1/2"	7/16"	3"	13/16"	
	TCS-2	2 1/2"	7/16"	2 1/2"	13/16"	
	TCS-3	2 1/2"	7/16"	3"	13/16"	
	TCS-4	2 1/2"	7/16"	3"	13/16"	
	TCS-5	2 1/2"	7/16"	3"	13/16"	
	TCS-6	2 1/2"	7/16"	3"	13/16"	A groove remains where rail and stile meet - not flush
	TCS-7	2 1/2"	7/16"	3"	13/16"	



# PANEL PROFILES



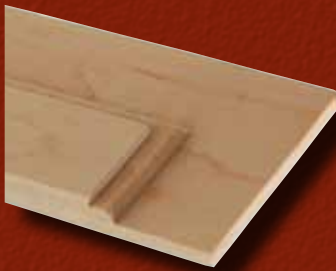
TP-1



TP-2



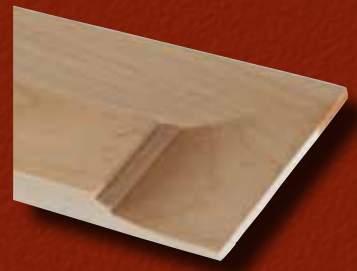
TP-3



TP-4



TP-5



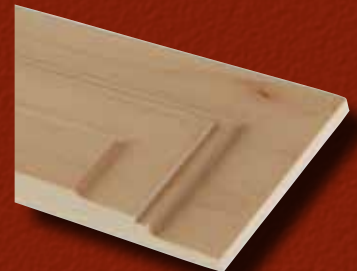
TP-6



TP-7



TP-8



TP-9



TP-10



TP-11



TP-12  
1/4" Beaded 1 1/2" OC



# PANEL PROFILES



TP-13



TP-14  
Solid Stock Beaded 2" OC



TP-15  
1/4" V-Groove 1 1/2" OC



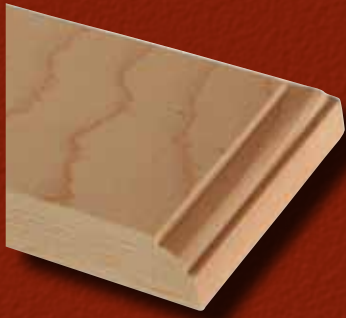
TP-16  
Solid Stock V-Groove 2" OC



# TNT Door & Drawer Panel Profile Specifications

	Panel Profile	Profile Cut Width	Panel	Bead Details	V-Groove Details	Notes
	TP-1	1 5/8"	Raised	NA	NA	
	TP-2	1 5/8"	Raised	NA	NA	
	TP-3	1 5/8"	Raised	NA	NA	
	TP-4	1 5/8"	Raised	NA	NA	
	TP-5	1 5/8"	Raised	NA	NA	
	TP-6	1 5/8"	Raised	NA	NA	
	TP-7	1 5/8"	Raised	NA	NA	
	TP-8	1 5/8"	Raised	NA	NA	
	TP-9	1 3/4"	Raised	NA	NA	
	TP-10	1/2"	Raised	NA	NA	
	TP-11	NA	1/4" Flat Panel	NA	NA	
	TP-12	NA	1/4" Beaded Flat Panel	3/16" Bead, 1 1/2" OC	NA	Custom bead spacing for additional charge
	TP-13	NA	7/16" Solid Wood Flat Panel	NA	NA	
	TP-14	NA	7/16" Solid Wood Beaded Flat Panel	3/16" Bead, 2" OC	NA	Custom bead spacing for additional charge
	TP-15	NA	1/4" V-Groove Flat Panel	NA	3/16" V-Groove, 1 1/2" OC	Custom V-Groove spacing for additional charge
	TP-16	NA	7/16" Solid Wood V-Groove Flat Panel	NA	3/16" V-Groove, 2" OC	Custom V-Groove spacing for additional charge

# EDGE PROFILES



T-1



T-2



T-3



T-4



T-5



T-6



T-7



T-8



T-9



T-10



T-11



T-12



# EDGE PROFILES



T-13



T-14 (1/4 W x 1/8 H Cove)



T-15 (1/4 W x 1/4 H Cove)



T-16 (3/8 W x 1/4 H Cove)



T-17 (3/8 W x 3/8 H Cove)



T-18



T-19



T-20



T-21

# TNT Door & Drawer Edge Profile Specifications

Edge Profile	Edge Width	Edge Depth	NOTES
T-1	3/8"	3/8"	
T-2	1/4"	1/4"	
T-3	1/2"	1/8"	Profile uses entire material thickness - note hardware limitation * Not available on mitred doors
T-4	7/16"	1/8"	
T-5	0"	0"	
T-6 1/4 Round	1/4"	1/4"	
T-7	13/16"	13/16"	Profile uses entire material thickness - note hardware limitation * Not available on mitred doors
T-8 Double Cove	5/8"	1/4"	
T-9	7/16"	5/16"	
T-10	11/16"	1/8"	
T-11	7/16"	7/16"	
T-12	5/16"	1/4"	
T-13	3/8"	5/16"	Profile uses entire material thickness - note hardware limitation * Not available on mitred doors
T-14	1/4"	1/8"	
T-15 1/4 Cove	1/4"	1/4"	
T-16	3/8"	1/4"	
T-17	3/8"	3/8"	
T-18	7/16"	7/16"	
T-19	5/16"	5/16"	
T-20	1/2"	1/8"	CNC Routed detail available on slabs only
T-21 Bevel	3/16"	3/16"	

**Notes:**

Some edge profiles limit the use of hardware.  
Due to sharpening profiles may vary slightly.



# PANEL CUT EDGE PROFILES



PC-TP-1



PC-TP-2



PC-TP-3



PC-TP-4



PC-TP-5



PC-TP-6



PC-TP-7



PC-TP-8



PC-TP-9



# TNT Door & Drawer Panel Cut Edge Profile Specifications

	Panel Cut Edge Profile	Matching Panel	Edge Width	Edge Depth	NOTES
	PC-TP-1	TP-1	1 1/4"	3/8"	
	PC-TP-2	TP-2	1 1/4"	3/8"	
	PC-TP-3	TP-3	1 1/4"	3/8"	
	PC-TP-4	TP-4	1 1/4"	3/8"	
	PC-TP-5	TP-5	1 1/4"	3/8"	
	PC-TP-6	TP-6	1 1/4"	3/8"	
	PC-TP-7	TP-7	1 1/4"	3/8"	
	PC-TP-8	TP-8	1 1/4"	3/8"	
	PC-TP-9	TP-9	1 1/4"	3/8"	

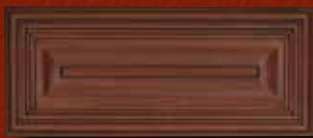
**Notes:**

Some edge profiles limit the use of hardware.

Due to sharpening profiles may vary slightly.



# MITRED DOORS



TMD-2 Drawer Front



TMD-4 Drawer Front



TMD-7 Drawer Front



Door Profile: TMD-1  
Panel: TP-2



Door Profile: TMD-3  
Panel: TP-1



Door Profile: TMD-5  
Panel: TP-4



TMD-7 Drawer Front



TMD-9 Drawer Front



TMD-11 Drawer Front



Door Profile: TMD-6  
Panel: TP-4



Door Profile: TMD-8  
Panel: TP-5



Door Profile: TMD-10  
Panel: TP-1



## MITRED DOORS



TMD-13 Drawer Front



TMD-16 Drawer Front



TMD-18 Drawer Front



Door Profile: TMD-12  
Panel: TP-14



Door Profile: TMD-15  
Panel: TP-4



Door Profile: TMD-17  
Panel: TP-2



TMD-20 Drawer Front



TMD-22 Drawer Front



TMD-24 Drawer Front



Door Profile: TMD-19  
Panel: TP-1



Door Profile: TMD-21  
Panel: TP-4



Door Profile: TMD-23  
Panel: TP-3

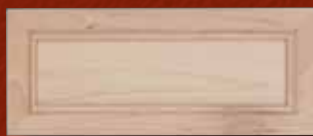
TMD-14 Profile can be found in the Applied Molding Door Section



## MITRED DOORS



TMD-26 Drawer Front



TMD-28 Drawer Front



TMD-30/TP-10 Drawer Front



Door Profile: TMD-25  
Panel: TP-5



Door Profile: TMD-27  
Panel: TP-13



Door Profile: TMD-29  
Panel: TP-2



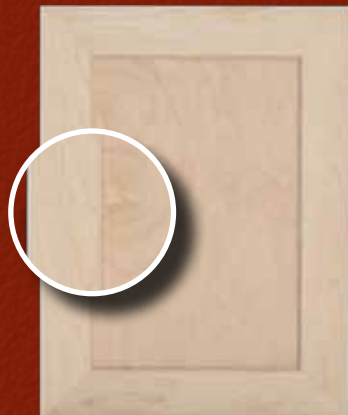
TMD-34-1 Drawer Front



TMD-36-6 Drawer Front



Door Profile: TMD-33-1  
Panel: TP-1



Door Profile: TMD-35-6  
Panel: TP-11

[TMD Profile 33-36 are available in all variations (1-7)]

TMD-31 Profile can be found in the Applied Molding Door Section



# ADVANTAGE SERIES MITRED DOORS



Slab



Montgomery B FP Front



Madison RP Front



Door Profile: Madison FP  
Panel: TP-11  
Inside Profile: Madison  
Outside Profile: T-6



Door Profile: Montgomery B FP  
Panel: TP-12  
Inside Profile: Montgomery  
Outside Profile: NA



Door Profile: Madison RP  
Panel: TP-1  
Inside Profile: Madison  
Outside Profile: T-6

Door Style	Rail Width	Inside Rail Profile	Panel Profile	Outside Edge Profile	Raised Panel Minimum	Flat Panel Minimum
Madison FP	2"	Madison	TP-11	T-5 or T-6	NA	7"x10"
Madison B FP	2"	Madison	TP-12	T-5 or T-6	NA	7"x10"
Madison RP	2"	Madison	TP-1	T-5 or T-6	7"x10"	NA
Montgomery FP	2"	Montgomery	TP-11	NA	NA	7"x10"
Montgomery B FP	2"	Montgomery	TP-12	NA	NA	7"x10"
Montgomery RP	2"	Montgomery	TP-1	NA	7"x10"	NA



# TNT Door & Drawer

## Mitred Door Specifications

	Door Style	Rail Width	Raised Panel Minimum	Flat Panel Minimum	Inside Profile	Panel	Edge
	TMD-1	2 13/16"	8 5/8"	7 1/4"	TMD1	Available in all TP Profiles	TMD1
	TMD-2	1 1/2"	6 1/4"	5 1/4"	TMD2	Available in all TP Profiles	TMD2
	TMD-3	2 7/8"	8 3/4"	7 1/4"	TMD3	Available in all TP Profiles	TMD3
	TMD-4	1 15/16"	7 1/8"	5 1/4"	TMD4	Available in all TP Profiles	TMD4
	TMD-5	3"	9"	7 1/4"	TMD5	Available in all TP Profiles	TMD5
	TMD-6	2 1/16"	7 1/8"	5 1/2"	TMD6	Available in all TP Profiles	TMD6
	TMD-7	1 7/16"	6 1/8"	5 1/4"	TMD7	Available in all TP Profiles	TMD7
	TMD-8	2 1/2"	8"	6 1/2"	TMD8	Available in all TP Profiles	Available in all T Profiles
	TMD-9	1 1/2"	6 1/4"	5 1/4"	TMD9	Available in all TP Profiles	Available in all T Profiles
	TMD-10	2 1/2"	8"	6 1/2"	TMD8	Available in all TP Profiles	Available in all T Profiles
	TMD-11	1 1/2"	6 1/4"	5 1/4"	TMD9	Available in all TP Profiles	Available in all T Profiles
	TMD-12A	3 1/4"	9 1/2"	8"	TMD12A	Available in all TP Profiles	TMD12A
	TMD-12	2 3/8"	7 3/4"	6 1/8"	TMD12	Available in all TP Profiles	TMD12
	TMD-13	1 13/16"	6 7/8"	5 1/4"	TMD13	Available in all TP Profiles	TMD13
	TMD-14 Rope Door	2 3/8"	7 3/4"	6 1/8"	TMD14	Available in all TP Profiles	TMD14
	TMD-14DF Rope Front	1 13/16"	6 7/8"	5 1/4"	TMD14DF	Available in all TP Profiles	TMD14DF
	TMD-15	2 3/8"	7 3/4"	6 1/8"	TMD15	Available in all TP Profiles	TMD15
	TMD-16	1 13/16"	6 7/8"	5 1/4"	TMD16	Available in all TP Profiles	TMD16
	TMD-17	2 7/8"	8 3/4"	7 1/4"	TMD17	Available in all TP Profiles	Available in all T Profiles
	TMD-18	1 13/16"	6 7/8"	5 1/4"	TMD18	Available in all TP Profiles	Available in all T Profiles
	TMD-19	2 7/8"	8 3/4"	7 1/4"	TMD19	Available in all TP Profiles	Available in all T Profiles
	TMD-20	1 13/16"	6 7/8"	5 1/4"	TMD20	Available in all TP Profiles	Available in all T Profiles
	TMD-21	2 7/8"	8 3/4"	7 1/4"	TMD21	Available in all TP Profiles	TMD21
	TMD-22	1 13/16"	6 7/8"	5 1/4"	TMD22	Available in all TP Profiles	TMD22
	TMD-23	2 7/8"	8 3/4"	7 1/4"	TMD23	Available in all TP Profiles	TMD23
	TMD-24	1 1/2"	6 1/4"	5 1/4"	TMD24	Available in all TP Profiles	TMD24
	TMD-25	2 7/8"	8 3/4"	7 1/4"	TMD25	Available in all TP Profiles	TMD25
	TMD-26	1 15/16"	7 1/8"	5 1/4"	TMD26	Available in all TP Profiles	TMD26
	TMD-27	2 1/2"	8"	6 1/2"	TMD27	Available in all TP Profiles	Available in all T Profiles
	TMD-28	1 1/2"	6 1/4"	5 1/4"	TMD28	Available in all TP Profiles	Available in all T Profile
	TMD-29	2 7/8"	8 3/4"	7 1/4"	TMD29	Available in all TP Profile	TMD29
	TMD-30	1 13/16"	6 7/8"	5 1/4"	TMD30	Available in all TP Profiles	TMD30
	TMD-31 Rope Door	2 7/8"	8 3/4"	7 1/4"	TMD31	Available in all TP Profiles	TMD31
	TMD-32 Rope Door	1 15/16"	7 1/8"	5 1/4"	TMD32	Available in all TP Profiles	TMD32
	TMD-33	2 1/2"	8"	6 1/2"	TMD33 (1-7)	Available in all TP Profiles	TMD33
	TMD-34	1 1/2"	6 1/4"	5 1/4"	TMD34 (1-7)	Available in all TP Profiles	TMD34
	TMD-35	2 1/2"	8"	6 1/2"	TMD35 (1-7)	Available in all TP Profiles	Available in all T Profiles
	TMD-36	1 1/2"	6 1/4"	5 1/4"	TMD36(1-7)	Available in all TP Profiles	Available in all T Profiles

**Notes:**

All mitre glass doors with mullions will have a mullion insert, as shown in Specialty Section.  
 If minimum size is used for 1 dimensions, add 2 inches for the other dimension.  
 All doors over 50" will be split equally unless otherwise specified. Mitred center rail as shown.

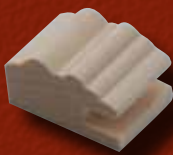




# MITRED RAIL PROFILES



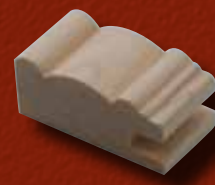
TMD-1



TMD-2



TMD-3



TMD-4



TMD-5



TMD-6



TMD-7



TMD-8



TMD-9



TMD-10



TMD-11



TMD-12A



TMD-12



TMD-13



TMD-14



TMD-14DF



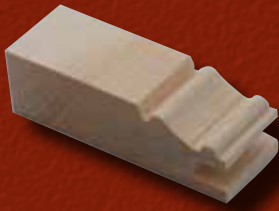
TMD-15



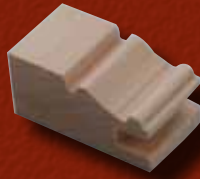
TMD-16



# MITRED RAIL PROFILES



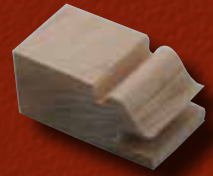
TMD-17



TMD-18



TMD-19



TMD-20



TMD-21



TMD-22



TMD-23



TMD-24



TMD-25



TMD-26



TMD-27



TMD-28



TMD-29



TMD-30



TMD-31



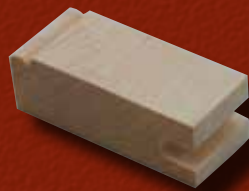
TMD-32



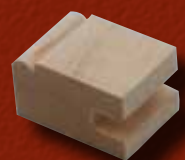
TMD-33-1



TMD-34-1



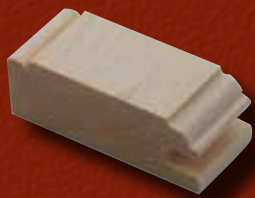
TMD-33-2



TMD-34-2



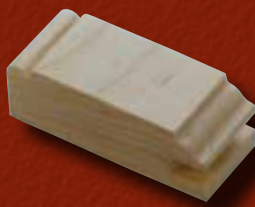
# MITRED RAIL PROFILES



TMD-33-3



TMD-34-3



TMD-33-4



TMD-34-4



TMD-33-5



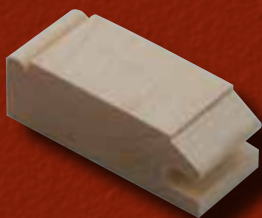
TMD-34-5



TMD-33-6



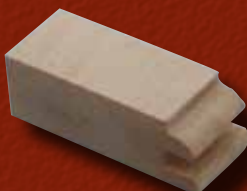
TMD-34-6



TMD-33-7



TMD-34-7



TMD-35-1



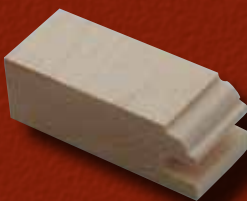
TMD-36-1



TMD-35-2



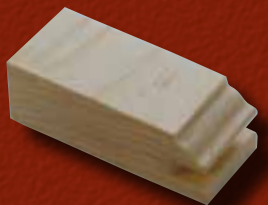
TMD-36-2



TMD-35-3



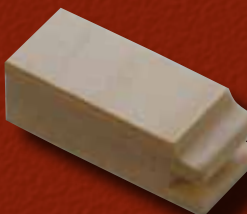
TMD-36-3



TMD-35-4



TMD-36-4



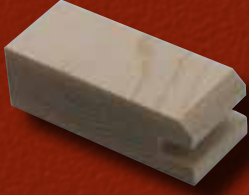
TMD-35-5



TMD-36-5



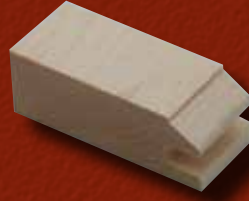
# MITRED RAIL PROFILES



TMD-35-6



TMD-36-6



TMD-35-7



TMD-36-7



# TNT Door & Drawer Mitred Rail Specifications

Mitred Rail	Rail Width	Tenon Length	Mullion Width	Finished Thickness
TMD-1	2 13/16"	7/16"	2 7/8"	13/16"
TMD-2	1 1/2"	7/16"	NA	13/16"
TMD-3	2 7/8"	7/16"	2 7/8"	13/16"
TMD-4	1 15/16"	7/16"	NA	13/16"
TMD-5	3"	7/16"	2 7/8"	13/16"
TMD-6	2 1/16"	7/16"	NA	13/16"
TMD-7	1 7/16"	7/16"	NA	13/16"
TMD-8	2 1/2"	7/16"	2 7/8"	13/16"
TMD-9	1 1/2"	7/16"	NA	13/16"
TMD-10	2 1/2"	7/16"	2 7/8"	13/16"
TMD-11	1 1/2"	7/16"	NA	13/16"
TMD-12A	3 1/4"	7/16"	2 7/8"	13/16"
TMD-12	2 3/8"	7/16"	2 7/8"	13/16"
TMD-13	1 13/16"	7/16"	NA	13/16"
TMD-14 Rope Door	2 3/8"	7/16"	2 7/8"	13/16"
TMD-14DF Rope Front	1 13/16"	7/16"	NA	13/16"
TMD-15	2 3/8"	7/16"	2 7/8"	13/16"
TMD-16	1 13/16"	7/16"	NA	13/16"
TMD-17	2 7/8"	7/16"	2 7/8"	13/16"
TMD-18	1 13/16"	7/16"	NA	13/16"
TMD-19	2 7/8"	7/16"	2 7/8"	13/16"
TMD-20	1 13/16"	7/16"	NA	13/16"
TMD-21	2 7/8"	7/16"	2 7/8"	13/16"
TMD-22	1 13/16"	7/16"	NA	13/16"
TMD-23	2 7/8"	7/16"	2 7/8"	13/16"
TMD-24	1 1/2"	7/16"	NA	13/16"
TMD-25	2 7/8"	7/16"	2 7/8"	13/16"
TMD-26	1 15/16"	7/16"	NA	13/16"
TMD-27	2 1/2"	7/16"	2 7/8"	13/16"
TMD-28	1 1/2"	7/16"	NA	13/16"
TMD-29	2 7/8"	7/16"	2 7/8"	13/16"
TMD-30	1 13/16"	7/16"	NA	13/16"
TMD-31 Rope Door	2 7/8"	7/16"	2 7/8"	13/16"
TMD-32 Rope Front	1 15/16"	7/16"	NA	13/16"
TMD-33-1	2 1/2"	7/16"	2 7/8"	13/16"
TMD-34-1	1 1/2"	7/16"	NA	13/16"
TMD-33-2	2 1/2"	7/16"	2 7/8"	13/16"
TMD-34-2	1 1/2"	7/16"	NA	13/16"
TMD-33-3	2 1/2"	7/16"	2 7/8"	13/16"
TMD-34-3	1 1/2"	7/16"	NA	13/16"
TMD-33-4	2 1/2"	7/16"	2 7/8"	13/16"
TMD-34-4	1 1/2"	7/16"	NA	13/16"
TMD-33-5	2 1/2"	7/16"	2 7/8"	13/16"
TMD-34-5	1 1/2"	7/16"	NA	13/16"
TMD-33-6	2 1/2"	7/16"	2 7/8"	13/16"
TMD-34-6	1 1/2"	7/16"	NA	13/16"
TMD-33-7	2 1/2"	7/16"	2 7/8"	13/16"
TMD-34-7	1 1/2"	7/16"	NA	13/16"
TMD-35-1	2 1/2"	7/16"	2 7/8"	13/16"
TMD-36-1	1 1/2"	7/16"	NA	13/16"
TMD-35-2	2 1/2"	7/16"	2 7/8"	13/16"
TMD-36-2	1 1/2"	7/16"	NA	13/16"
TMD-35-3	2 1/2"	7/16"	2 7/8"	13/16"
TMD-36-3	1 1/2"	7/16"	NA	13/16"
TMD-35-4	2 1/2"	7/16"	2 7/8"	13/16"
TMD-36-4	1 1/2"	7/16"	NA	13/16"
TMD-35-5	2 1/2"	7/16"	2 7/8"	13/16"
TMD-36-5	1 1/2"	7/16"	NA	13/16"
TMD-35-6	2 1/2"	7/16"	2 7/8"	13/16"
TMD-36-6	1 1/2"	7/16"	NA	13/16"
TMD-35-7	2 1/2"	7/16"	2 7/8"	13/16"
TMD-36-7	1 1/2"	7/16"	NA	13/16"



# APPLIED MOLDING COPE AND STICK DOORS



1515DF RW FP\*



1515DF RP\*



1515DF FP



Door Profile: 1515 RW FP  
Panel: TP-13  
Inside Profile: TCS-1  
Outside Profile: T-2  
Molding Option: #1



Door Profile: 1515 RP  
Panel: TP-5  
Inside Profile: TCS-3  
Outside Profile: T-2  
Molding Option #1



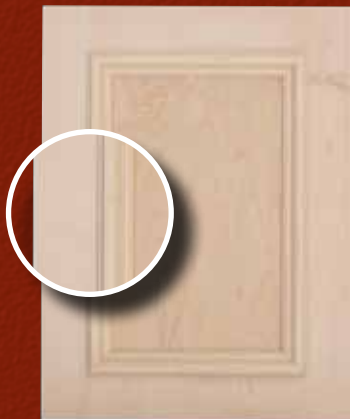
Door Profile: 1515 RP OPT B  
Panel: TP-1 OPT B  
Inside Profile: TCS-2  
Outside Profile: T-1  
Molding Option #2



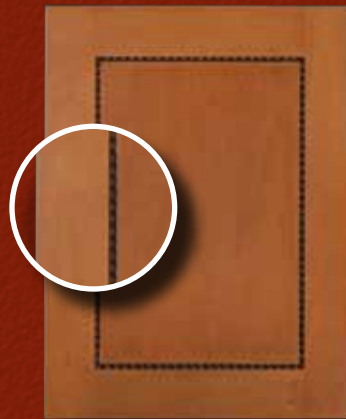
1515DF FP\*



1515DF FP\*



Door Profile: 1515 FP  
Panel: TP-11  
Inside Profile: TCS-2  
Outside Profile: T-5  
Molding Option #4



Door Profile: 1515 FP  
Panel: TP-11  
Inside Profile: TCS-2  
Outside Profile: T-5  
Molding Option: Rope

\* Profiles match door below



# APPLIED MOLDING MITRED DOORS



TMD-14DF



TMD-32



TMD-34-2



Door Profile: TMD-14  
Panel: TP-13  
Molding Option: Rope Option



Door Profile: TMD-31  
Panel: TP-1  
Molding Option: Rope Option



Door Profile: TMD-33-2  
Panel: TP-11  
Molding Option: #2



# TNT Door & Drawer

## Applied Molding Doors

Type	Door Style	TCS Width	Raised Panel Minimum	Option B RP Min.	Flat Panel Minimum	Inside Profile	Panel	Option B Panel	Edge	Mold
NA	SLAB	NA	NA	NA	NA	NA	Minimum 6" x 3 1/2"	NA	All T Profiles	ALL
Cope & Stick	1515	2 1/2"	8" x 10"	9" x 11"	8" x 10"	All TCS Profiles	All TP profiles, except TP-9, min 8 1/4" x 10 1/4"	All TP Opt B profiles, except TP-9 Opt B, min 9 1/4" x 11 1/4"	All T Profiles	Opt 1,5
Cope & Stick	1515DF	2 1/2"	12" x 6 3/4"	13" x 7 3/4"	12" x 6"	All TCS Profiles	All TP profiles, except TP-9, min 12 1/4" x 7"	All TP Opt B profiles except TP-9 Opt B, min 13 1/4" x 8"	All T Profiles	Opt 1,5
Cope & Stick	S1515	2 1/2"	8" x 10"	9" x 11"	8" x 10"	only TCS-2	All TP profiles, except TP-9, min 8 1/4" x 10 1/4"	All TP Opt B profiles, except T-9 Opt B, min 9 1/4" x 11 1/4"	All T Profiles	ALL
Cope & Stick	S1515DF	2 1/2"	12" x 6 3/4"	13" x 7 3/4"	12" x 6"	only TCS-2	All TP profiles, except TP-9, min 12 1/4" x 7"	All TP Opt B profiles, except T-9 Opt B, min 13 1/4" x 8"	All T Profiles	ALL
Mitred	TMD-14 Rope Door	2 3/8"	7 3/4"	NA	6 1/8"	TMD-14	All TP profiles	NA	TMD-14	3/8" Rope
Mitred	TMD-14DF Rope Door	1 13/16"	6 7/8"	NA	5 1/4"	TMD-14DF	All TP profiles	NA	TMD-14DF	3/8" Rope
Mitred	TMD-31 Rope Door	2 7/8"	8 3/4"	NA	7 1/4"	TMD-31	All TP profiles	NA	TMD-31	3/8" Rope
Mitred	TMD-32 Rope Door	1 15/16"	7 1/8"	NA	5 1/4"	TMD-32	All TP profiles	NA	TMD-32	3/8" Rope
Mitred	TMD-33-2	2 1/2"	8"	9"	6 1/2"	TMD-33-2	All TP profiles, except TP-9, min 8 1/4"	All TP Opt B profiles, except TP-9 Opt B, min. 9 1/4"	TMD-33-2	ALL
Mitred	TMD-34-2	1 1/2"	6 1/4"	7 1/4"	5 1/4"	TMD-34-2	All TP profiles, except TP-9, min 6 1/2"	All TP Opt B profiles, except TP-9 Opt B, min. 7 1/2"	TMD-34-2	ALL

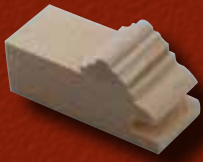
**Notes:**

All drawer fronts under 8" in height must be checked to insure 1 3/8" top and bottom rail is possible.

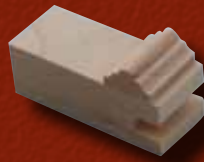
All doors over 50" will be split equally unless otherwise specified.



# APPLIED MOLDING PROFILES



TCS-1 Molding Option 1



TCS-2 Molding Option 1



TCS-2 Molding Option 2



TCS-2 Molding Option 3



TCS-2 Molding Option 4



TCS-2 Molding Option 6



TCS-3 Molding Option 1



TCS-3 Molding Option 5



TCS-4 Molding Option 1



TCS-5 Molding Option 1



TMD-14 Rope Option



TMD-14DF Rope Option



TMD-31 Rope Option



TMD-32 Rope Option



# TNT Door & Drawer

## Applied Mold Stick Profile Specifications

Rail Profile with Molding Option	Standard Width	Tenon Width	Molding Option Detail
TCS-1 with Mold Option 1	2 1/2"	7/16"	Option 1 applies to the face of the stick profile
TCS-2 with Mold Option 1	2 1/2"	7/16"	Option 1 applies to the face of the stick profile
TCS-2 with Mold Option 2	2 1/2"	7/16"	Option 2 applies to the face of the stick profile and partially to the panel
TCS-2 with Mold Option 3	2 1/2"	7/16"	Option 3 applies to the face of the stick profile and partially to the panel
TCS-2 with Mold Option 4	2 1/2"	7/16"	Option 4 applies to the face of the stick profile and partially to the panel
TCS-2 with Mold Option 6	2 1/2"	7/16"	Option 6 applies to the face of the stick profile and partially to the panel
TCS-3 with Mold Option 1	2 1/2"	7/16"	Option 1 applies to the face of the stick profile
TCS-3 with Mold Option 5	2 1/2"	7/16"	Option 5 applies to the face of the stick profile
TCS-4 with Mold Option 1	2 1/2"	7/16"	Option 1 applies to the face of the stick profile
TCS-5 with Mold Option 1	2 1/2"	7/16"	Option 1 applies to the face of the stick profile
TMD-14 with Rope Option	2 3/8"	7/16"	3/8" Rope Molding applies to the face of the mitre profile
TMD-14DF with Rope Option	1 13/16"	7/16"	3/8" Rope Molding applies to the face of the mitre profile
TMD-31 with Rope Option	2 7/8"	7/16"	3/8" Rope Molding applies to the face of the mitre profile
TMD-32 with Rope Option	1 15/16"	7/16"	3/8" Rope Molding applies to the face of the mitre profile



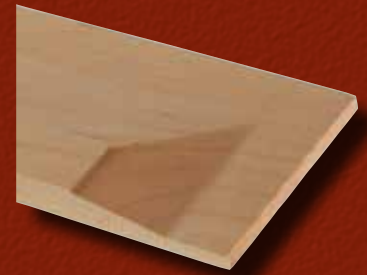
## OPTION "B" PANEL PROFILES



TP-1 OPTION B



TP-2 OPTION B



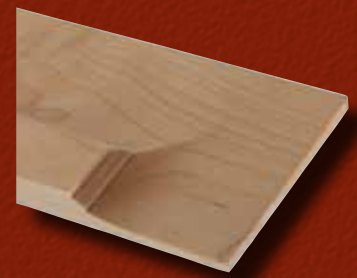
TP-3 OPTION B



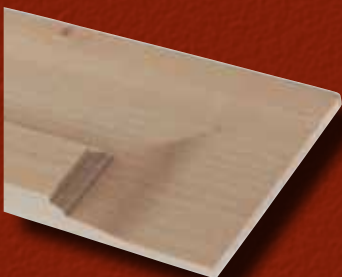
TP-4 OPTION B



TP-5 OPTION B



TP-6 OPTION B



TP-7 OPTION B



TP-8 OPTION B



TP-9 OPTION B

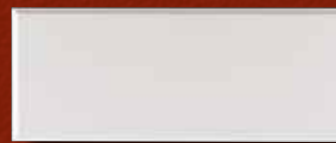
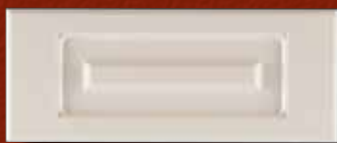
### Option B Profile Specifications

Panel Profile	Panel Cut Width
TP-1 OPTION B	2 1/8"
TP-2 OPTION B	2 1/8"
TP-3 OPTION B	2 1/8"
TP-4 OPTION B	2 1/8"
TP-5 OPTION B	2 1/8"
TP-6 OPTION B	2 1/8"
TP-7 OPTION B	2 1/8"
TP-8 OPTION B	2 1/8"
TP-9 OPTION B	2 1/4"

Option B panel profiles are used for raised panel applied mold doors.



# MDF RAISED ROUTED DOORS



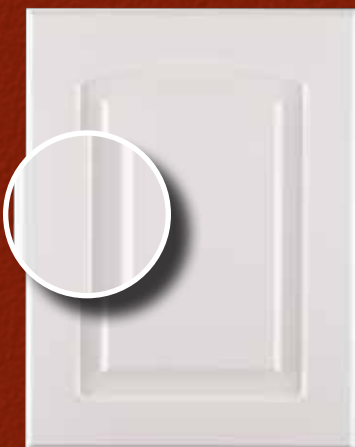
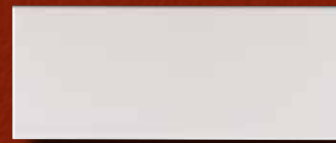
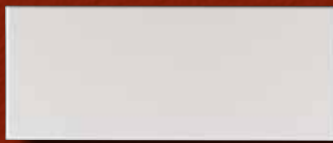
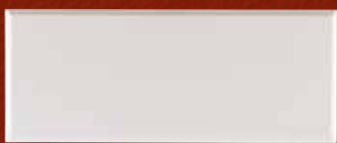
Door Profile: TMDF1515  
Inside Route: RRD-2  
Outside Route: EP-6



Door Profile: TMDF1515  
Beaded Option  
Inside Route: RRD-1  
Outside Route: EP-2



Door Profile: TMDF2015  
Inside Route: RRD-1  
Outside Route: EP-7



Door Profile: TMDF2515  
Inside Route: RRD-1  
Outside Route: EP-8



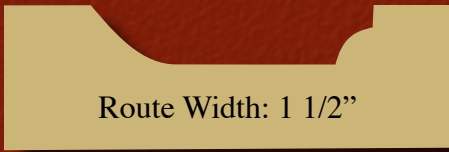
Door Profile: TMDF3515  
Inside Route: RRD-1  
Outside Route: EP-6



Door Profile: TMDF4015  
Inside Route: RRD-1  
Outside Route: EP-6

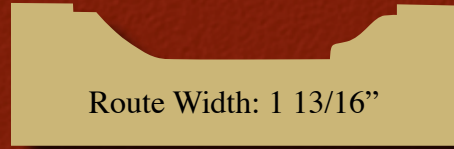


# MDF RAISED ROUTED PROFILES



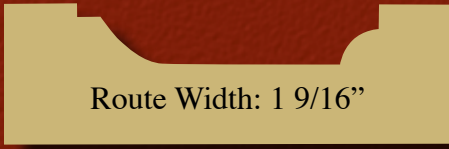
Route Width: 1 1/2"

RRD-1



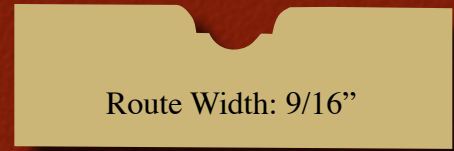
Route Width: 1 13/16"

RRD-8



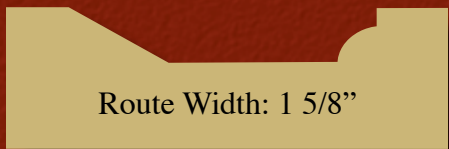
Route Width: 1 9/16"

RRD-2



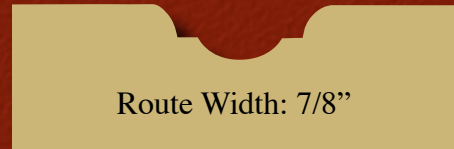
Route Width: 9/16"

RRD-9



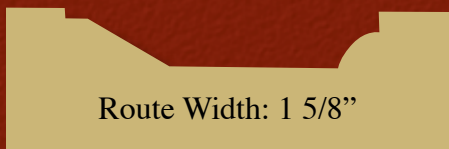
Route Width: 1 5/8"

RRD-3



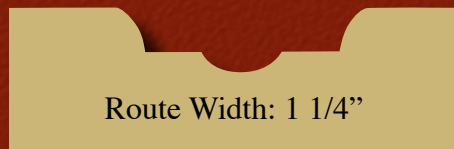
Route Width: 7/8"

RRD-10



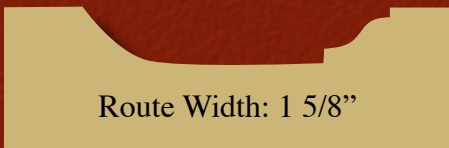
Route Width: 1 5/8"

RRD-4



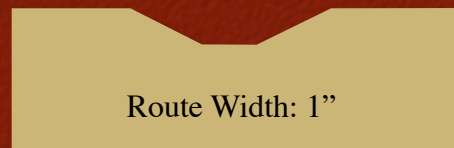
Route Width: 1 1/4"

RRD-11



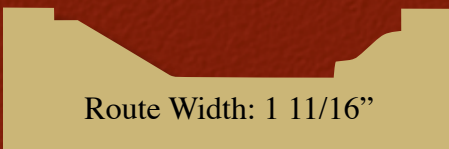
Route Width: 1 5/8"

RRD-5



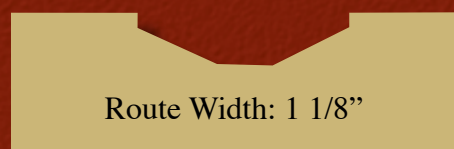
Route Width: 1"

RRD-12



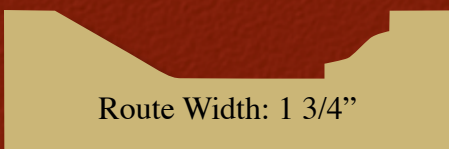
Route Width: 1 11/16"

RRD-6



Route Width: 1 1/8"

RRD-13

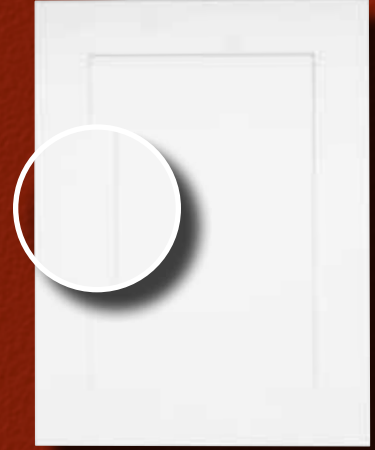
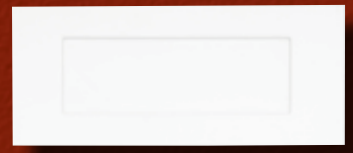
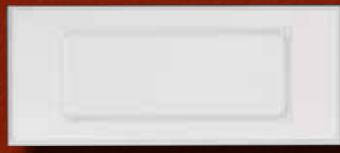
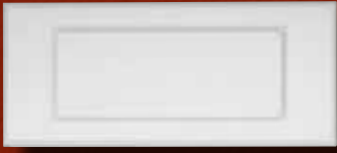


Route Width: 1 3/4"

RRD-7



# MDF FLAT ROUTED DOORS



Door Profile: TMDF1515  
Inside Route: FRD-1  
Outside Route: EP-2

Door Profile: TMDF1515  
Inside Route: FRD-2  
Outside Route: EP-1

Door Profile: TMDF1515  
Inside Route: FRD-3  
Outside Route: EP-5



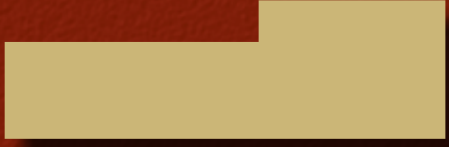
# MDF FLAT ROUTED PROFILES



FRD-1



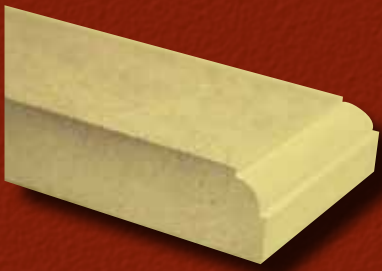
FRD-2



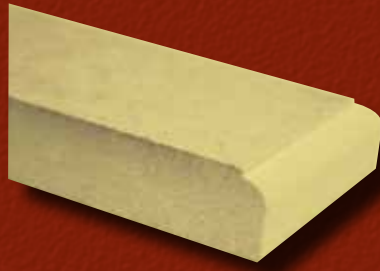
FRD-3



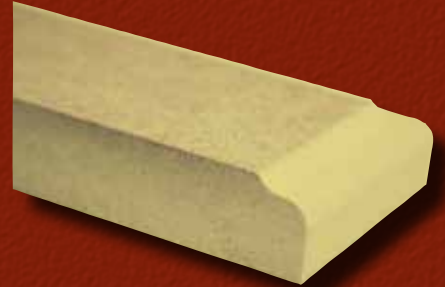
# MDF EDGE PROFILES



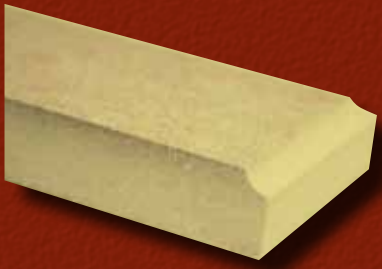
EP-1  
Edge Width: 5/16"  
Edge Depth: 5/16"



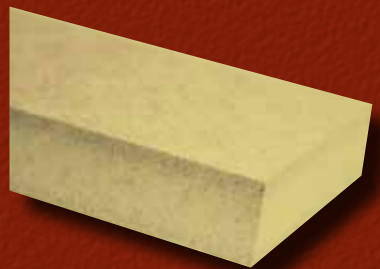
EP-2  
Edge Width: 1/4"  
Edge Depth: 1/4"



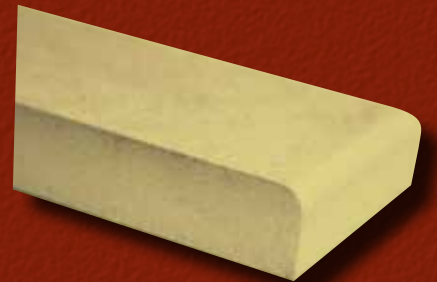
EP-3  
Edge Width: 7/16"  
Edge Depth: 3/16"



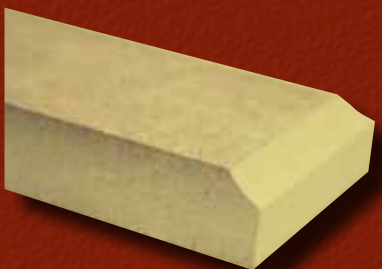
EP-4  
Edge Width: 1/4"  
Edge Depth: 3/16"



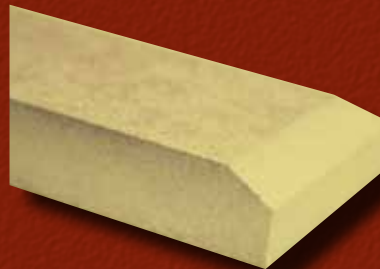
EP-5  
Edge Width: 0"  
Edge Depth: 0"



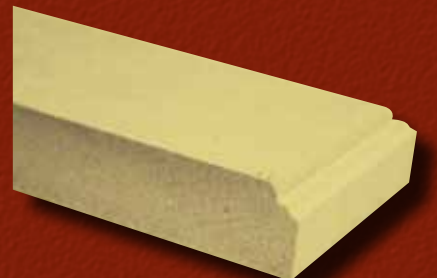
EP-6  
Edge Width: 3/16"  
Edge Depth: 3/16"



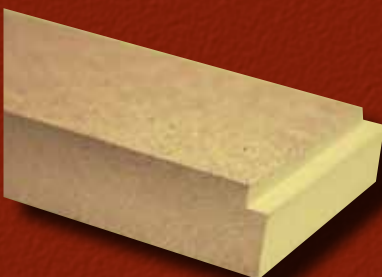
EP-7  
Edge Width: 5/16"  
Edge Depth: 1/4"



EP-8  
Edge Width: 7/16"  
Edge Depth: 1/4"



EP-9  
Edge Width: 1/4"  
Edge Depth: 1/4"



EP-10  
Edge Width: 3/16"  
Edge Depth: 3/16"



# TNT Door & Drawer

## MDF Raised & Flat Routed Door Specifications

Door Style	Route Width	Arch Height	Raised Route Minimum	Flat Route Minimum	Inside Route	Outside Route	Minimum Size
TMDFSLAB DF	NA	NA	NA	NA	NA	Available in all EP Routes	5"x5"
TMDF1515 DF	2 1/2"	NA	12"x6"	12"x5"	Available in all RRD & FRD Routes	Available in all EP Routes	NA
TMDF1515	2 1/2"	NA	8"x10"	8"x10"	Available in all RRD & FRD Routes	Available in all EP Routes	NA
TMDF2015	2 1/2"	1 5/8"	10"x10"	10"x10"	Available in all RRD & FRD Routes	Available in all EP Routes	NA
TMDF2515	2 1/2"	1"	8"x10"	8"x10"	Available in all RRD & FRD Routes	Available in all EP Routes	NA
TMDF3515	2 1/2"	1 5/8"	10"x10"	10"x10"	Available in all RRD & FRD Routes	Available in all EP Routes	NA
TMDF4015	2 1/2"	1"	10"x10"	10"x10"	Available in all RRD & FRD Routes	Available in all EP Routes	NA

**Notes:**

All drawer fronts under 8" in height will have 1 3/8" top and bottom.

All doors over 50" will be split equally unless otherwise specified.



# MDF MULTIPASS ROUTED DOORS



Door Profile: MRD-1  
Drawer Profile: MRD-1F

Door Profile: MRD-2  
Drawer Profile: MRD-2F

Door Profile: MRD-7  
Drawer Profile: MRD-7F



Door Profile: MRD-8  
Drawer Profile: MRD-8F



# MDF MULTIPASS ROUTED PROFILES



MRD-1



MRD-1F



MRD-2



MRD-3



MRD-4



MRD-4F



MRD-5



MRD-6



MRD-7



MRD-7F



MRD-8



MRD-9



# TNT Door & Drawer

## MDF Multipass Routed Profile Specifications

Door Style	Rail Width	Raised Route Minimum	Flat Route Minimum	Inside Route	Outside Route	Notes:
MRD-1	2 1/2"	8"x10"	NA	MRD-1	MRD-1	
MRD-1F	1 3/4"	12"x6 1/2"	NA	MRD-1F	MRD-1F	
MRD-2	2 1/2"	8"x10"	NA	MRD-2	MRD-2	
MRD-2F	1 3/4"	12"x6 1/2"	NA	MRD-2F	MRD-2F	
MRD-3	2 1/2"	NA	8"x10"	MRD-3	MRD-3	
MRD-3F	1 3/4"	NA	12"x 5 1/4"	MRD-3F	MRD-3F	
MRD-4	2 1/2"	8"x10"	NA	MRD-4	MRD-4	
MRD-4F	1 3/4"	12"x 6 1/2"	NA	MRD-4F	MRD-4F	
MRD-5	2 1/2"	8"x10"	NA	MRD-5	MRD-5	
MRD-5F	1 3/4"	12"x 6 1/2"	NA	MRD-5F	MRD-5F	
MRD-6	2 1/2"	NA	8"x10"	MRD-6	MRD-6	
MRD-6F	1 3/4"	NA	12"x 5 1/4"	MRD-6F	MRD-6F	
MRD-7	2 1/2"	8"x10"	NA	MRD-7	MRD-7	
MRD-7F	1 1/4"	12"x 6"	NA	MRD-7F	MRD-7F	
MRD-8	2 1/2"	8"x10"	NA	MRD-8	MRD-8	
MRD-8F	1 1/4"	12"x 6"	NA	MRD-8F	MRD-8F	
MRD-9	2 1/2"	NA	8"x10"	MRD-9	MRD-9	
MRD-9F	1 1/4"	NA	12"x 5"	MRD-9F	MRD-9F	

**Notes:**

All doors over 50" will be split equally unless otherwise specified.



# SPECIALTY DOOR AND PANELS





# SPECIALTY DOOR AND PANELS



Contact TNT Door and Drawer for any specialty doors, drawer fronts or panels.

Orders: 770-385-1119

Toll Free: 1-877-TNT-1119

Online: [www.TNTDoor.com](http://www.TNTDoor.com)



# MOLDING PROFILES



CAP-1  
1 1/8" W X 11/16" H



CAP-2  
1 1/8" W X 5/8" H



CAP-3  
13/16" W X 11/16" H



CAP-4  
1 1/4" W X 3/4" H



CAP-5  
1" W x 11/16" H



CAP-6  
3/4" W x 3/4" H



TAM-1  
3/4" W x 3/8" H



TAM-2  
1 5/16" W x 11/16" H



TAM-3  
1/2" W x 1/4" H



TSM-1 (Double Roll)  
3/4" W x 1/4" H



TSM-2  
3/4" W x 1/4" H  
(Available in 3/4"-1 1/2" W)



SHOE-1  
3/4" W x 1/2" H



TPM-1  
1 1/2" W x 1" H

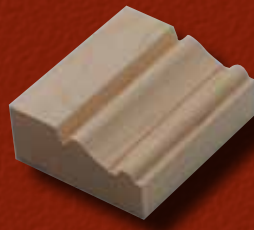
Mold length varies depending on wood species.



# MOLDING PROFILES



TLM-1  
1 3/4" W x 3/4" H



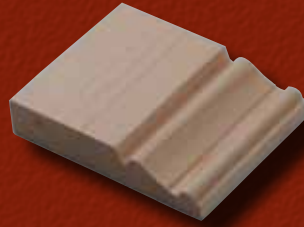
TLM-2  
1 3/4" W x 3/4" H



TLM-3  
1 3/4" W x 3/4" H



TLM-4  
1 3/4" W x 7/8" H



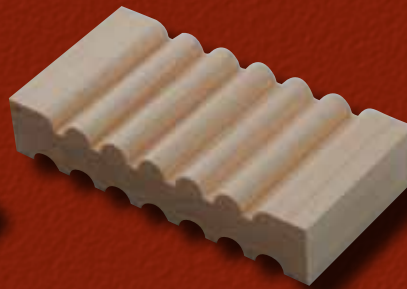
TCA-1  
2 1/2" W x 1/2" H  
(Available in 1 1/4" - 2 7/8" W)



TCR-1  
4" W X 13/16" H



TBM-1  
3 3/4" W X 3/4" H



TRM-1  
4" W x 3/4" H



TFM-1  
4" W x 3/4" H



# SPECIALTY CROWN MOLDING



SC-1.75  
Rise: 1 1/8"  
Projection: 1 1/4"



SC-2.5  
Rise: 1 3/4"  
Projection: 1 3/4"



SC-2.625  
Rise: 1 7/8"  
Projection: 2"



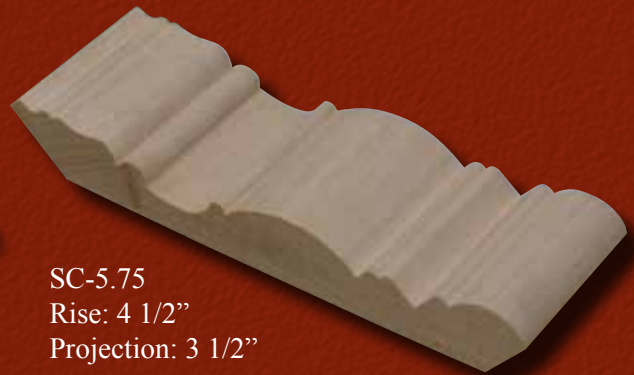
SC-3.25  
Rise: 2 5/8"  
Projection: 2"



SC-5  
Rise: 3 7/8"  
Projection: 3 1/4"



SC-5.25  
Rise: 3 3/4"  
Projection: 3 5/8"



SC-5.75  
Rise: 4 1/2"  
Projection: 3 1/2"



SC-6.5  
Rise: 4 1/2"  
Projection: 4 1/2"



## TRADITIONAL CROWN MOLDING



TC-3  
Rise: 2 1/2"  
Projection: 1 3/4"



TC-4  
Rise: 3 1/4"  
Projection: 2 1/2"



TC-5  
Rise: 4"  
Projection: 3"

## INSERT CROWN MOLDING



IC-3.5  
Rise: 2 3/4"  
Projection: 2 1/4"



IC-5.5  
Rise: 4 1/4"  
Projection: 3 3/8"



ICD-3.5  
Rise: 2 3/4"  
Projection: 2 1/4"



ICD-5.5  
Rise: 4 1/4"  
Projection: 3 3/8"



ICR-3.5  
Rise: 2 3/4"  
Projection: 2 1/4"



ICR-5.5  
Rise: 4 1/4"  
Projection: 3 3/8"

Mold length varies depending on wood species.